

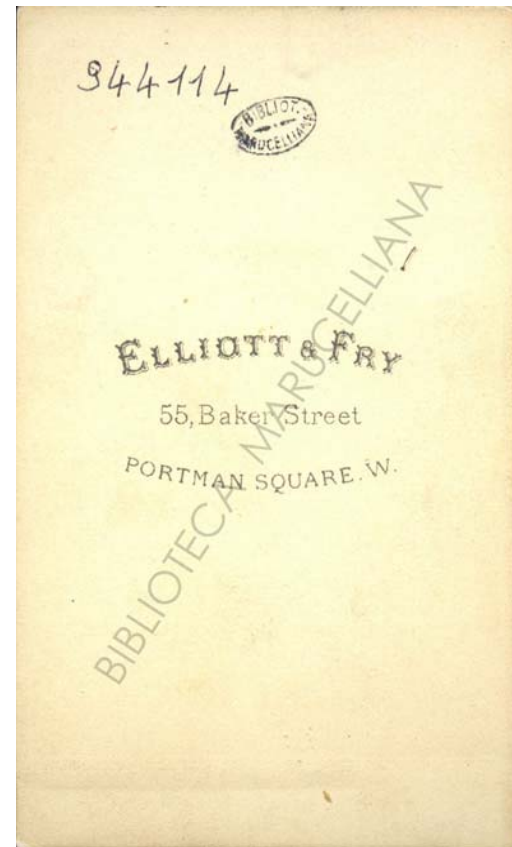
The image features a decorative gold-colored frame with intricate floral and scrollwork patterns, set against a dark background. The frame is centered and contains the text "Fondo Vitali (10)".

*Fondo
Vitali
(10)*

10.01r



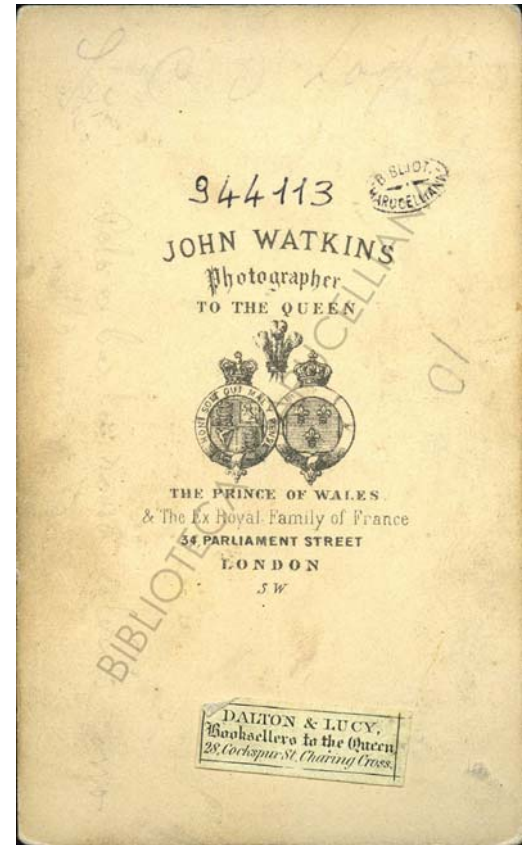
10.01v



10.02r



10.02v



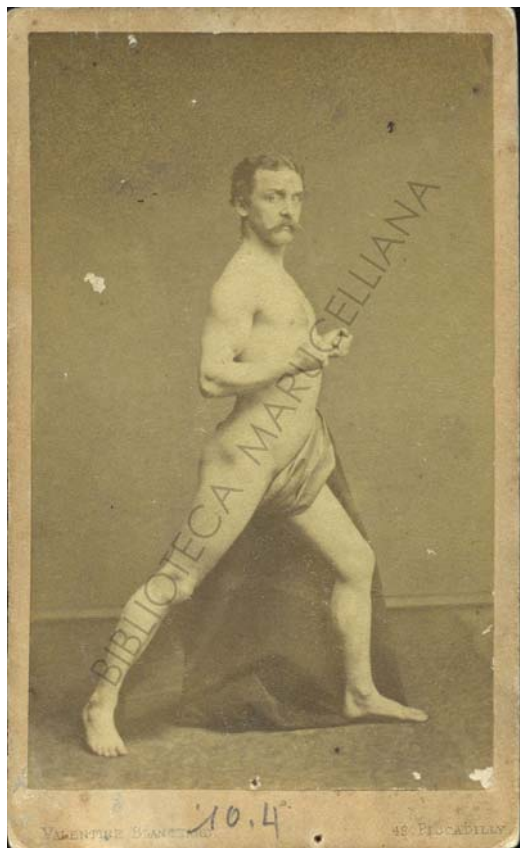
10.03r



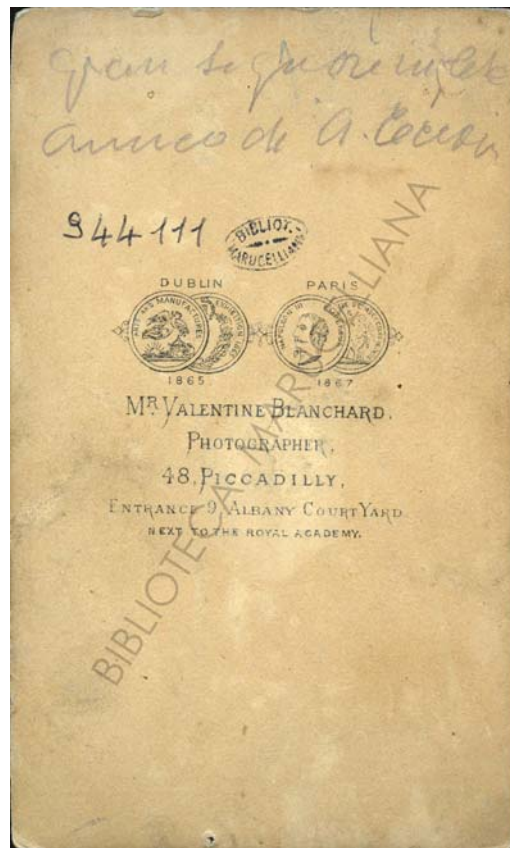
10.03v



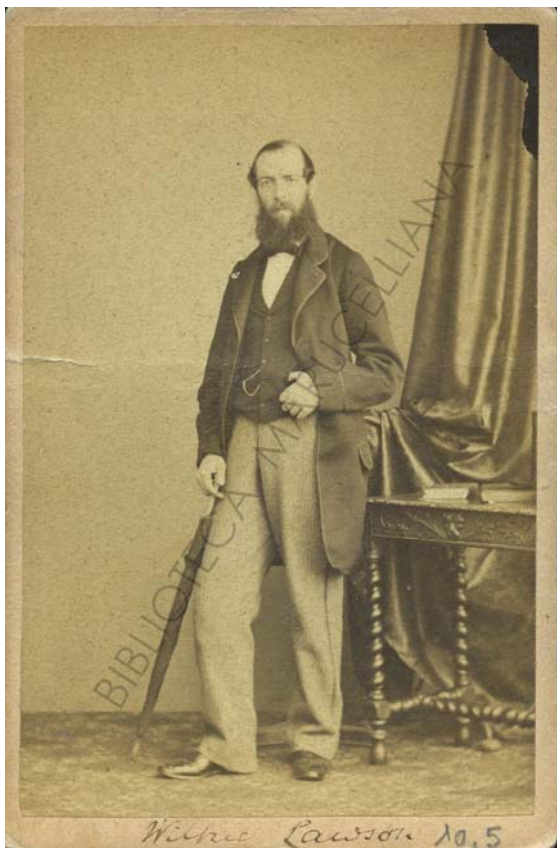
10.04r



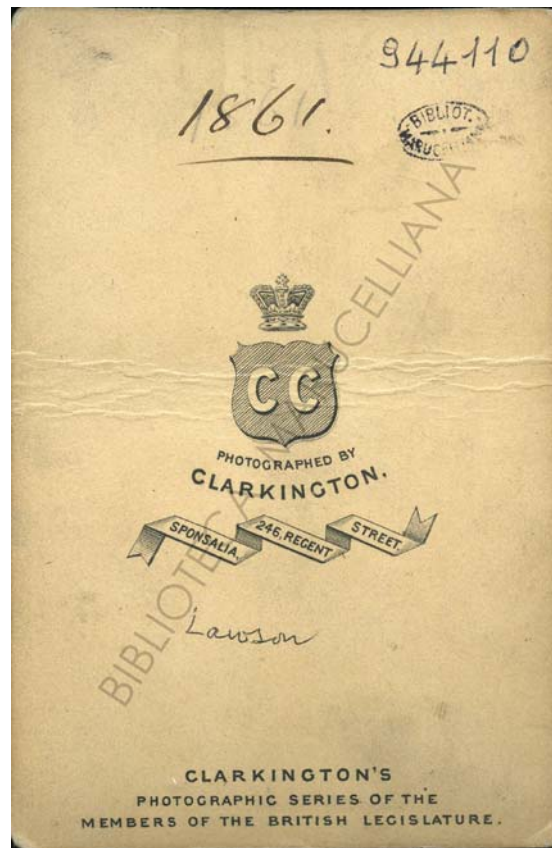
10.04v



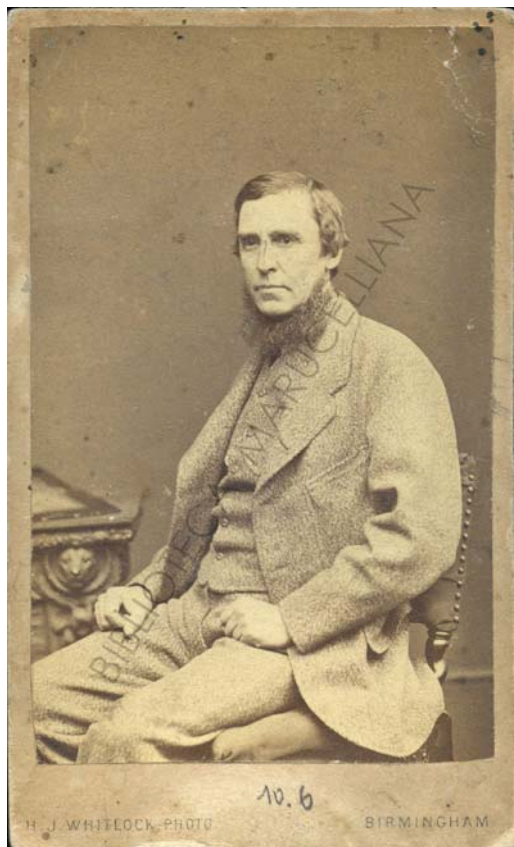
10.05r



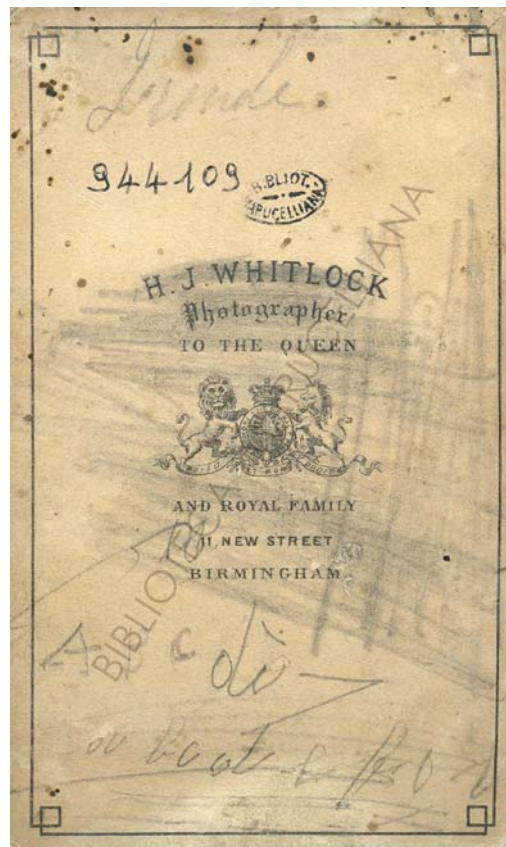
10.05v



10.06r



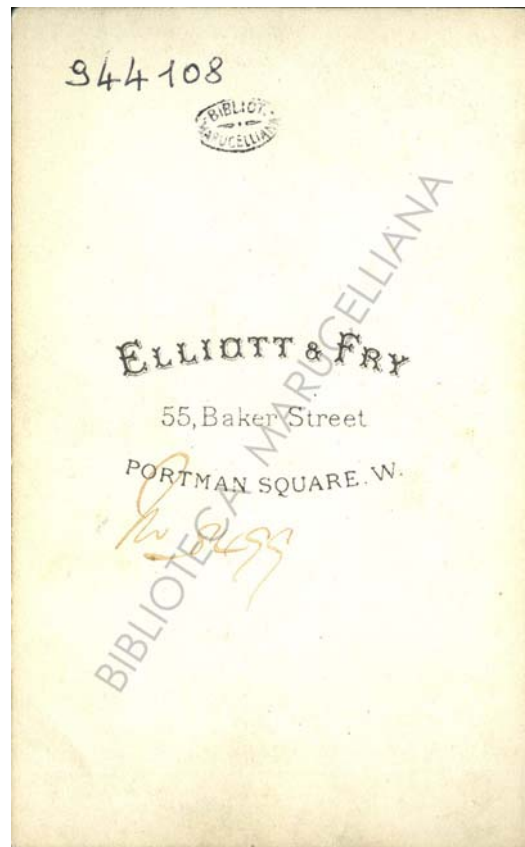
10.06v



10.07r



10.07v



10.08r



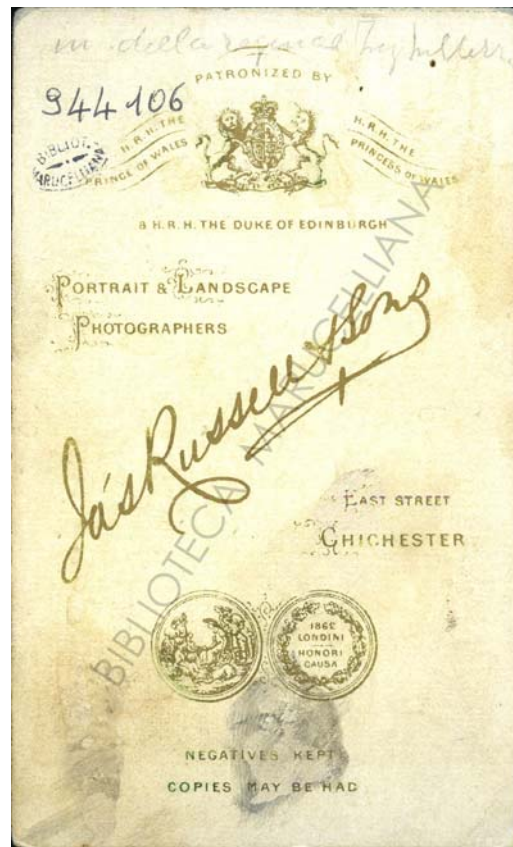
10.08v



10.09r



10.09v



10.10r



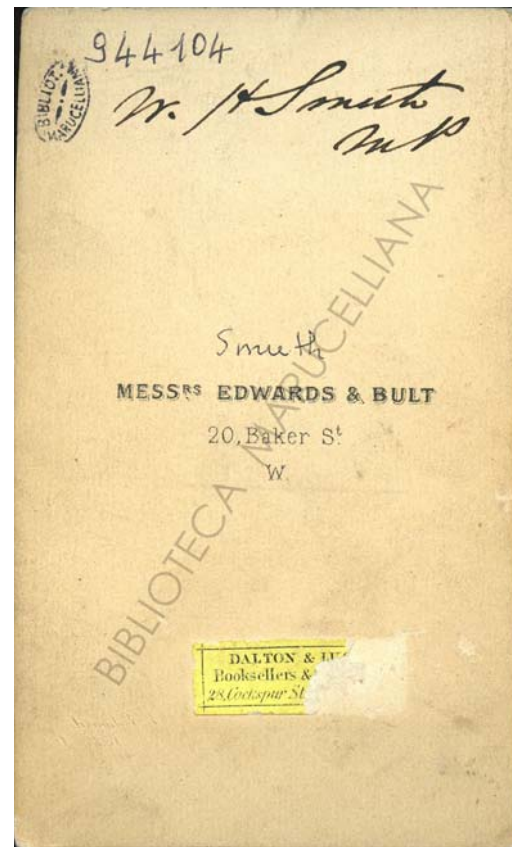
10.10v



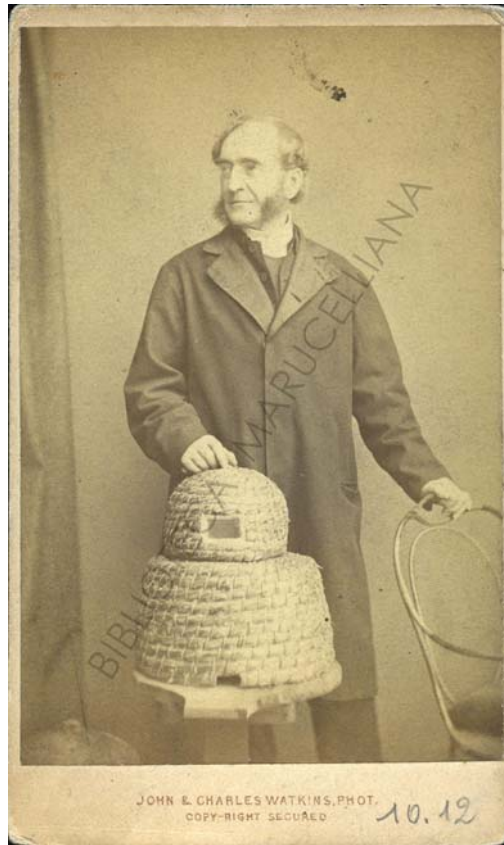
10.11r



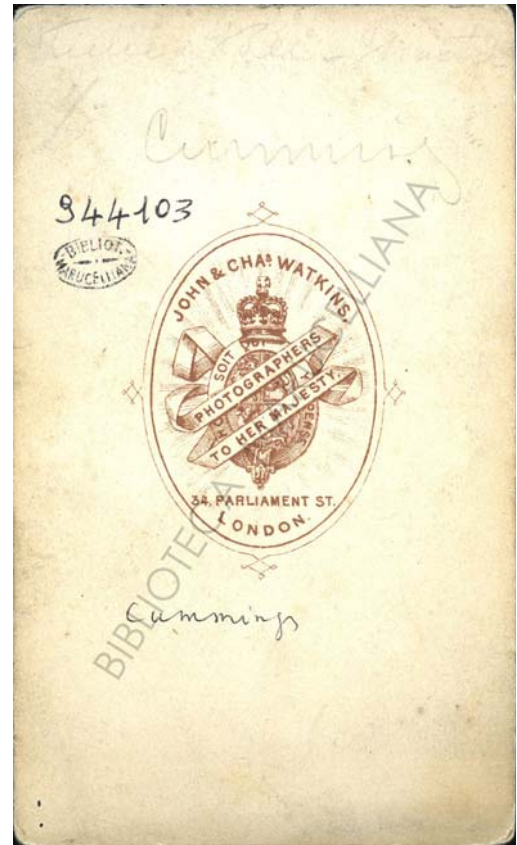
10.11v



10.12r



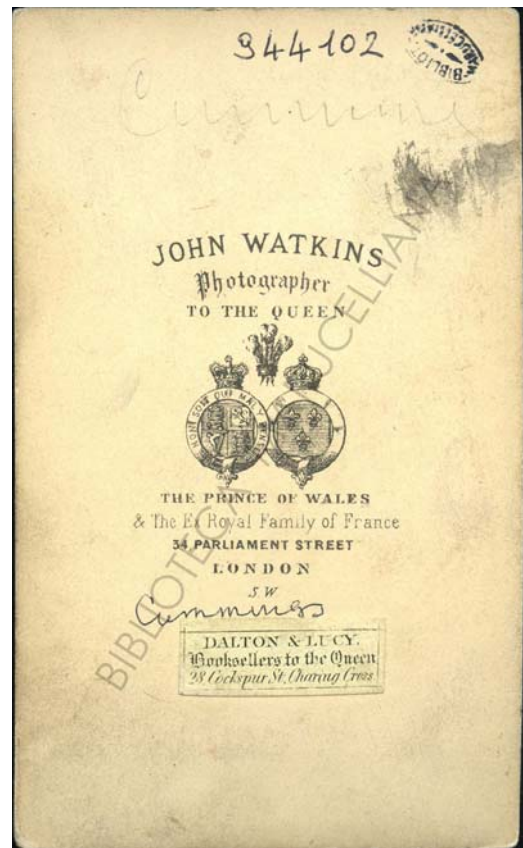
10.12v



10.13r



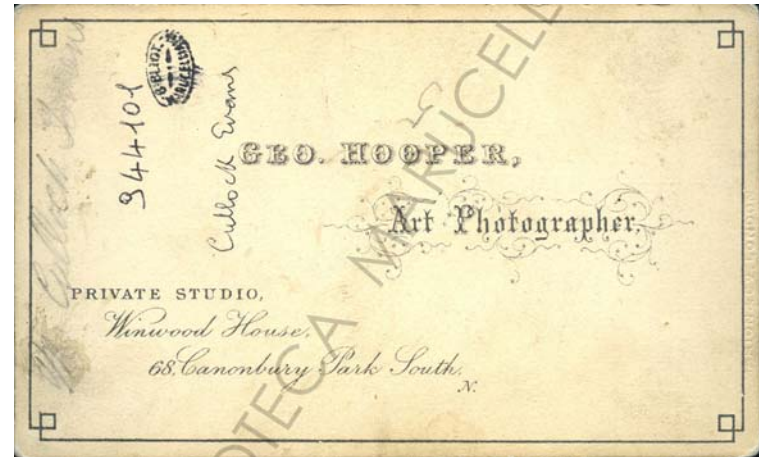
10.13v



10.14r



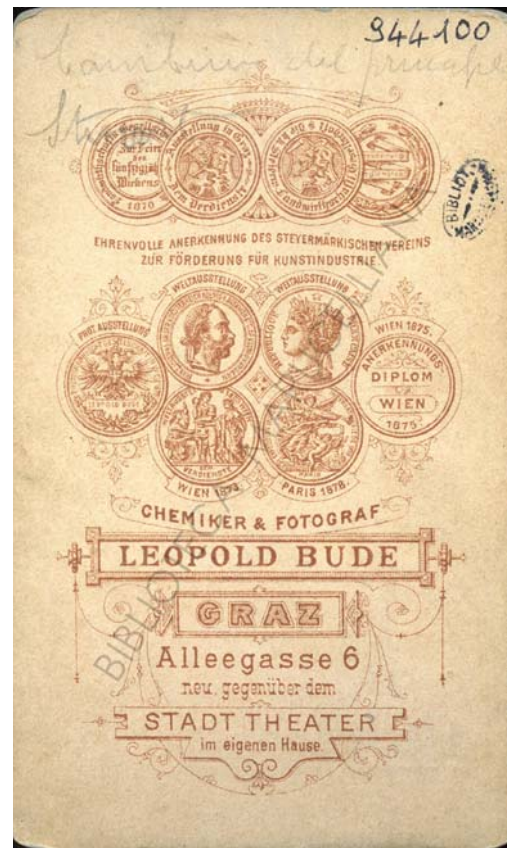
10.14v



10.15r



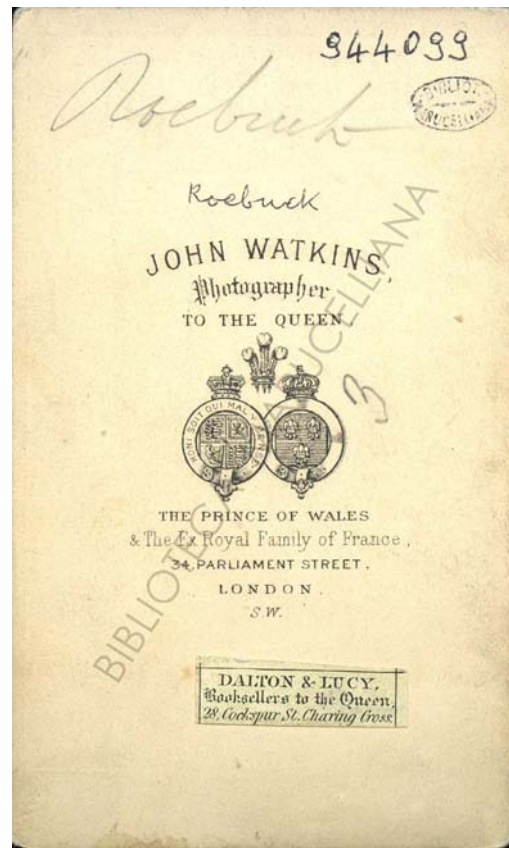
10.15v



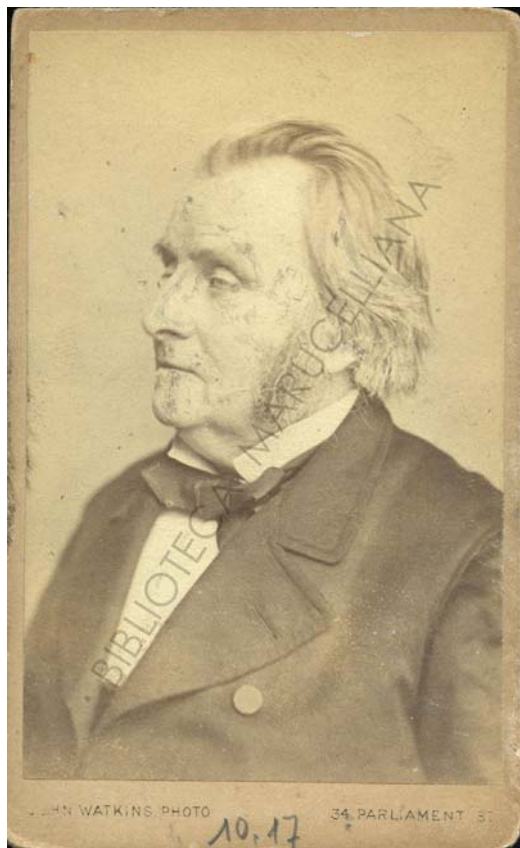
10.16r



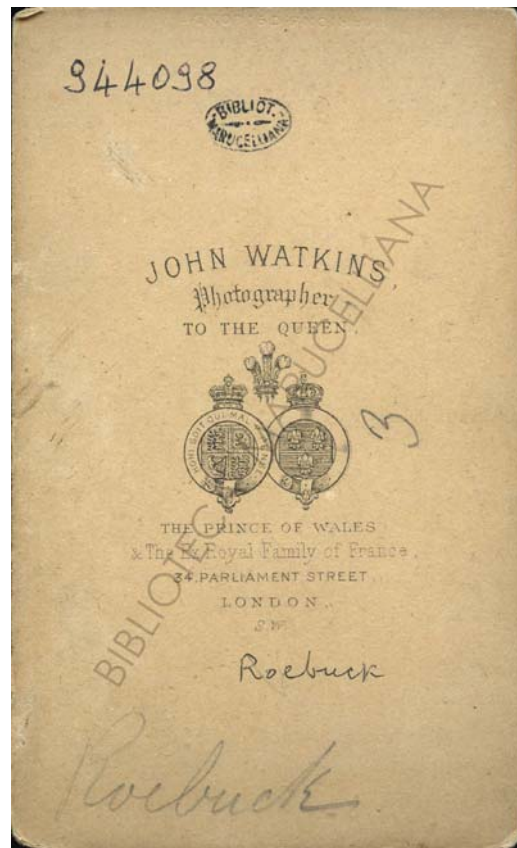
10.16v



10.17r



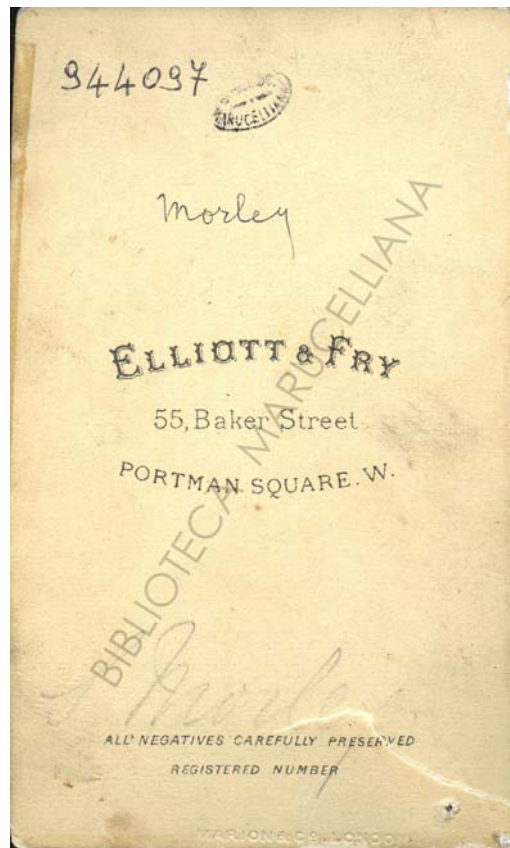
10.17v



10.18r



10.18v



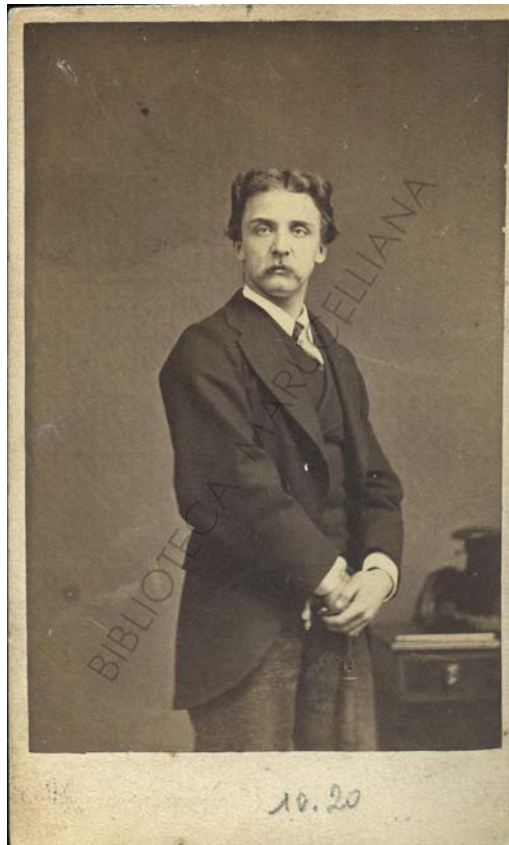
10.19r



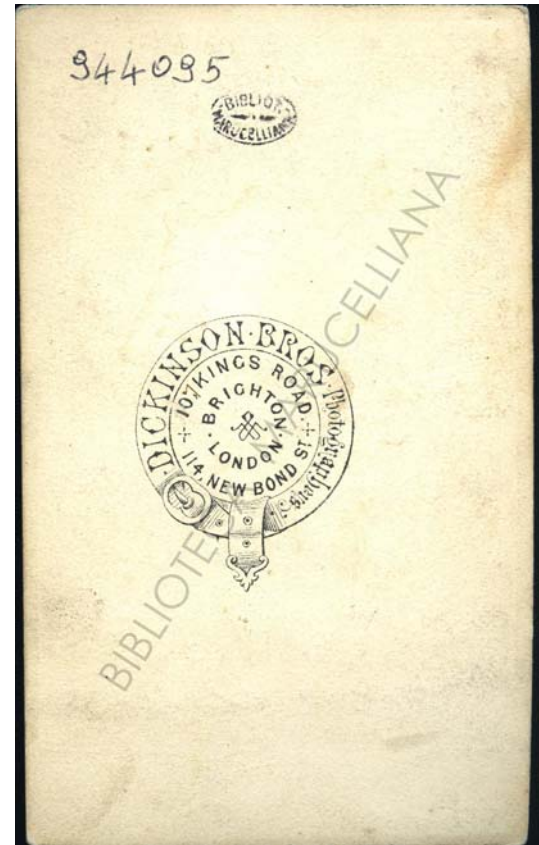
10.19v



10.20r



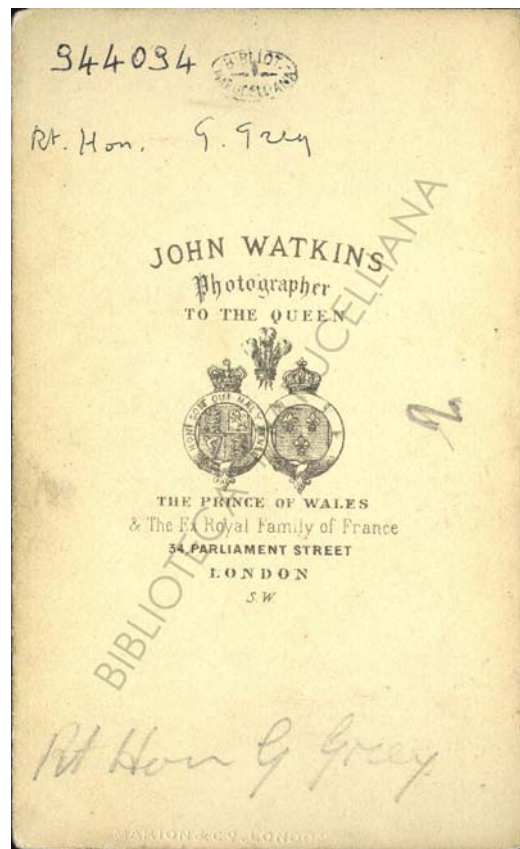
10.20v



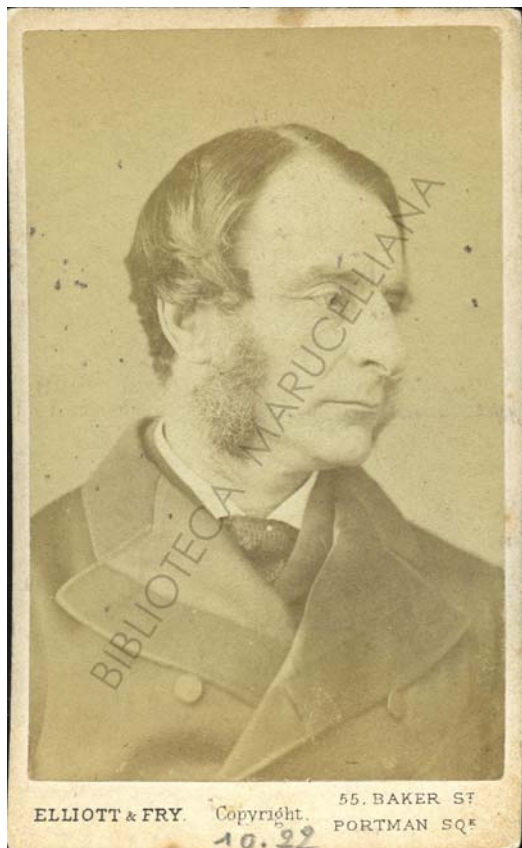
10.21r



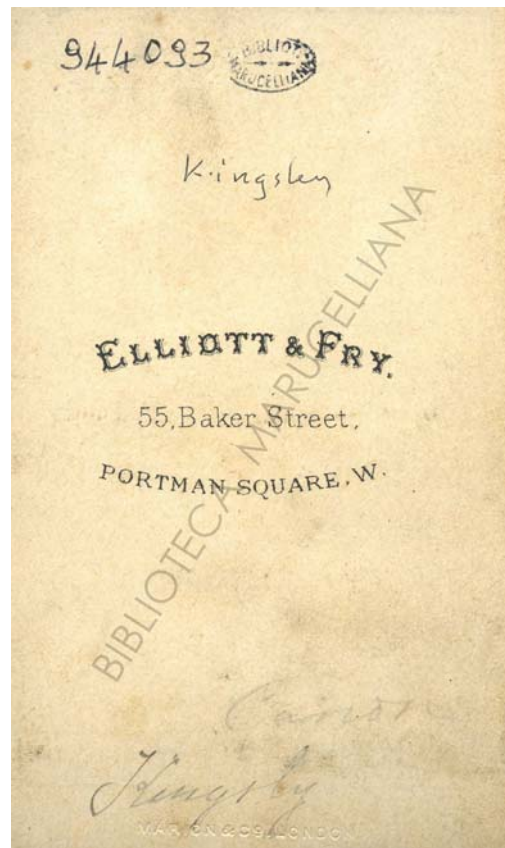
10.21v



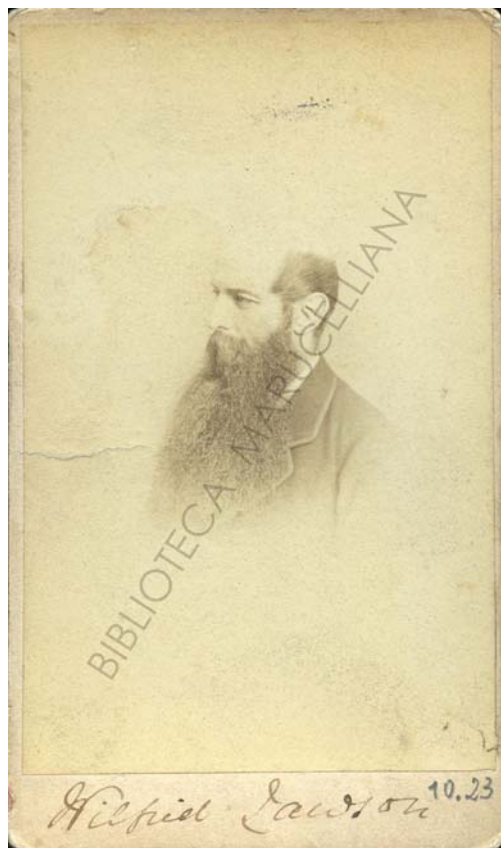
10.22r



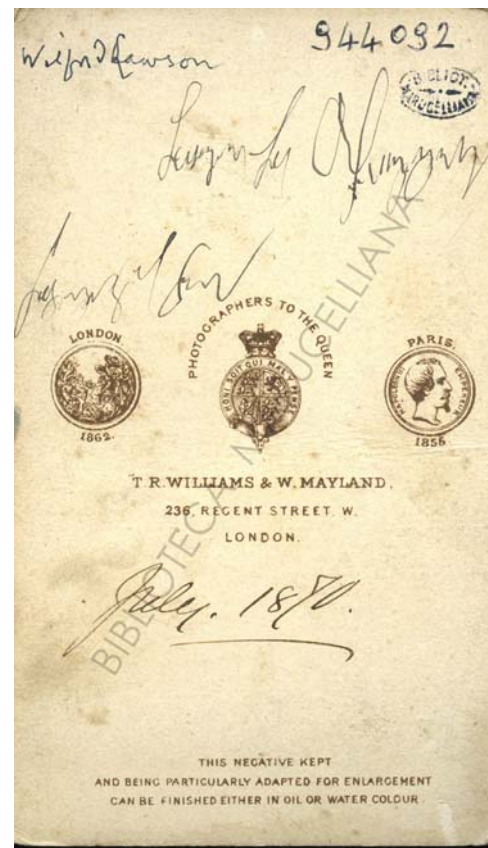
10.22v



10.23r



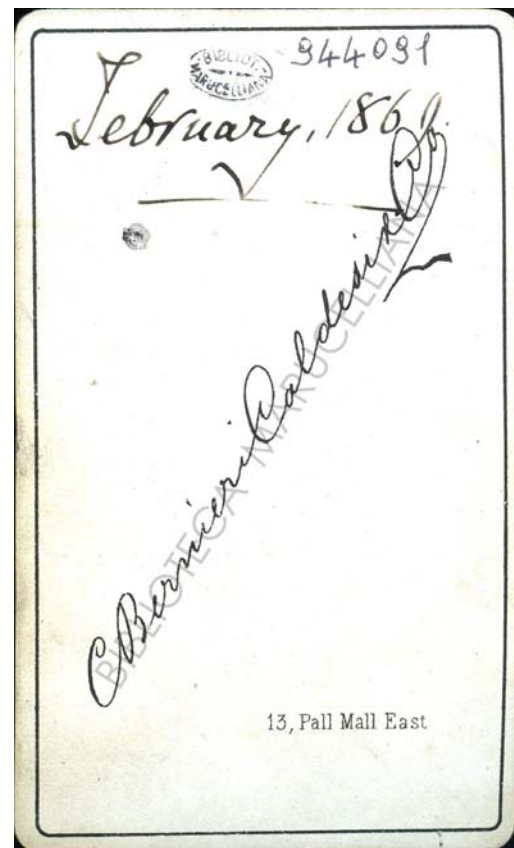
10.23v



10.24r



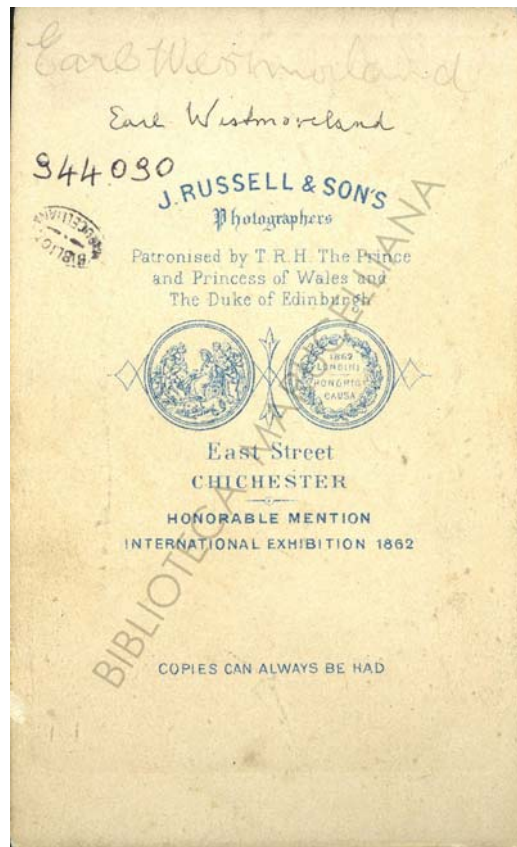
10.24v



10.25r



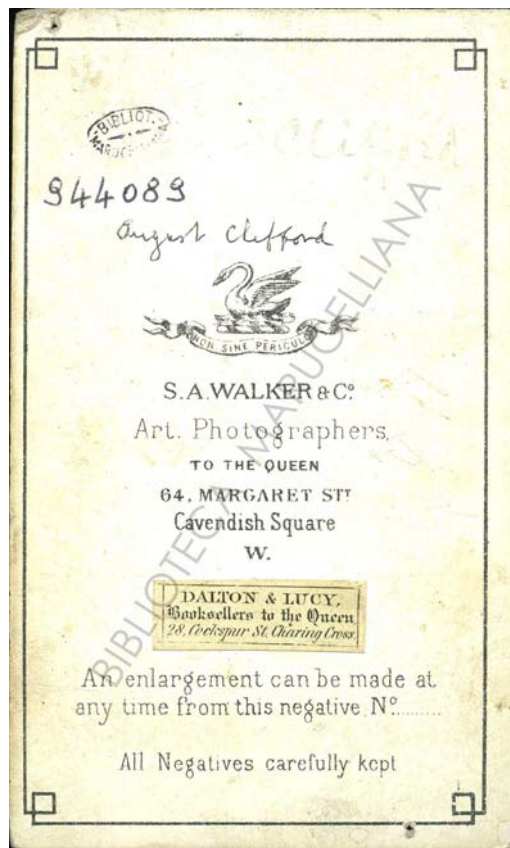
10.25v



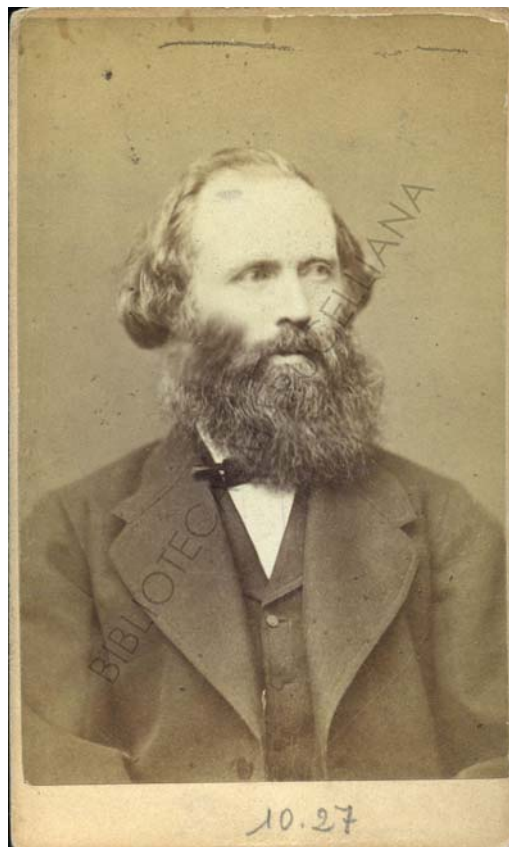
10.26r



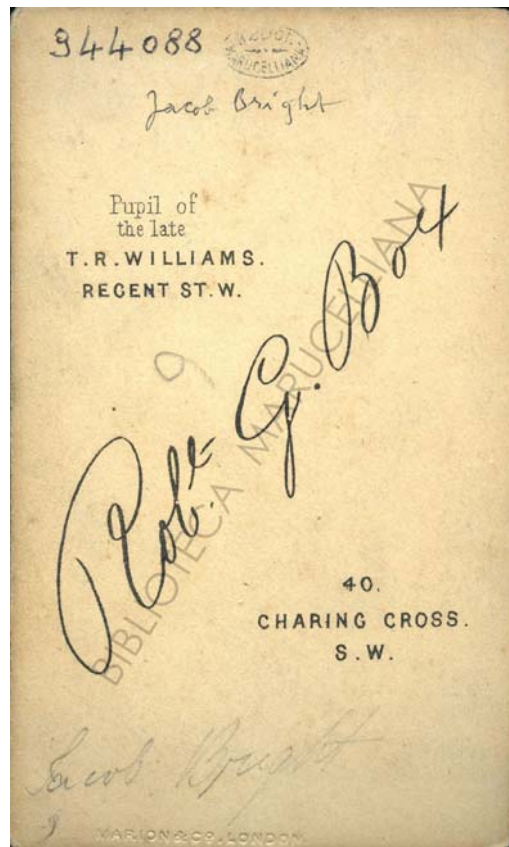
10.26v



10.27r



10.27v



10.28r



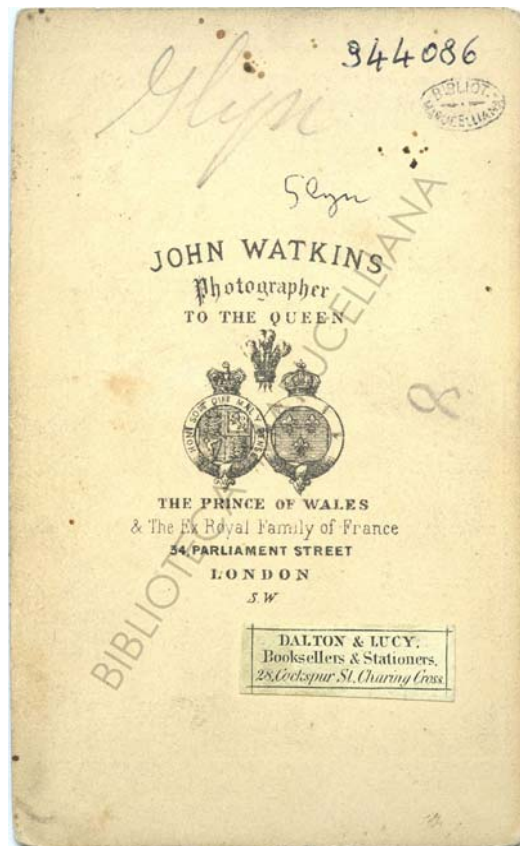
10.28v



10.29r



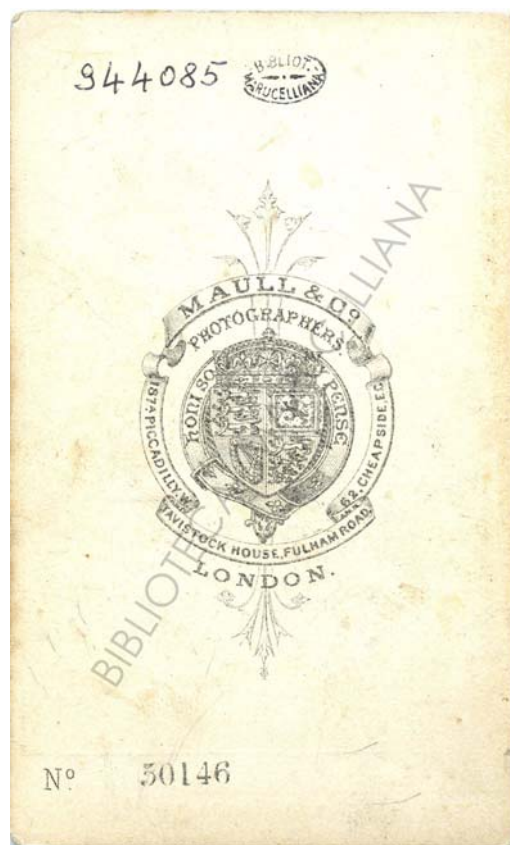
10.29v



10.30r



10.30v



10.31r



10.31v



10.32r



10.32v



10.33r



10.33v



10.34r



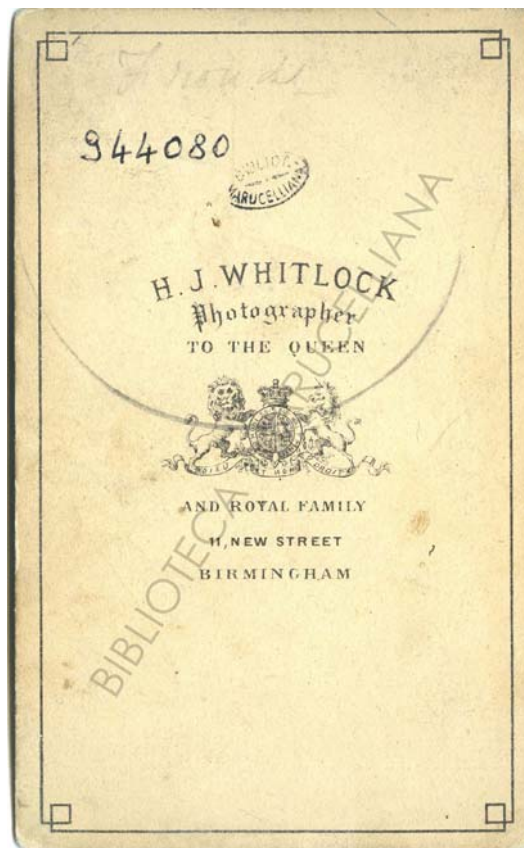
10.34v



10.35r



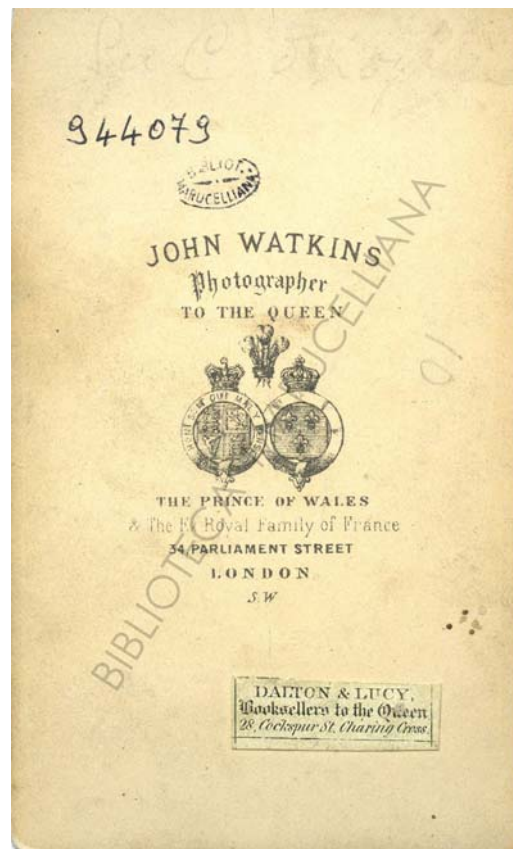
10.35v



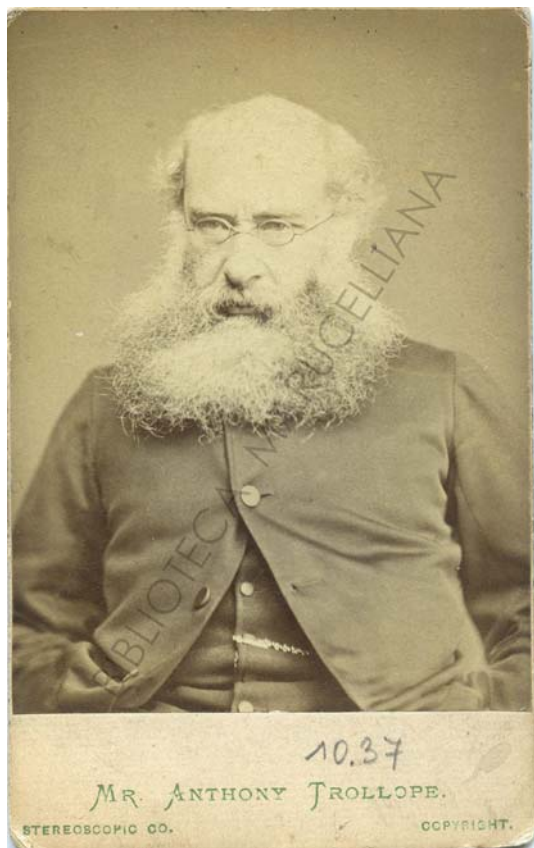
10.36r



10.36v



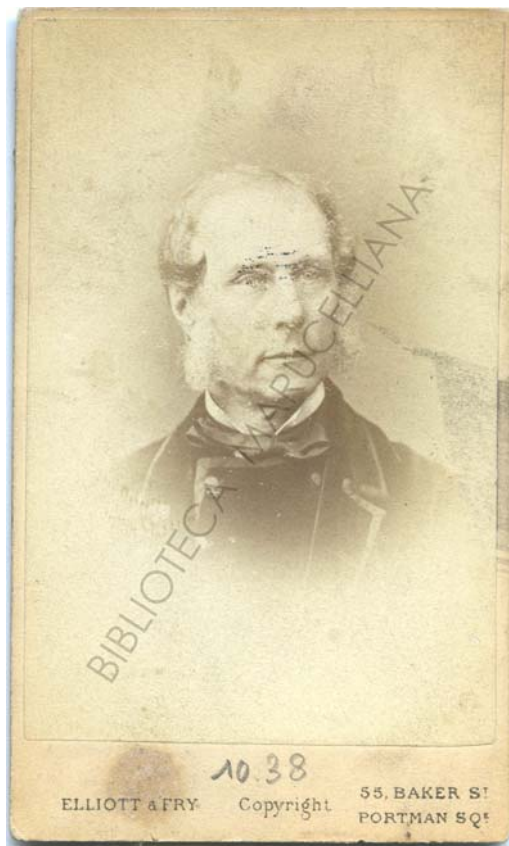
10.37r



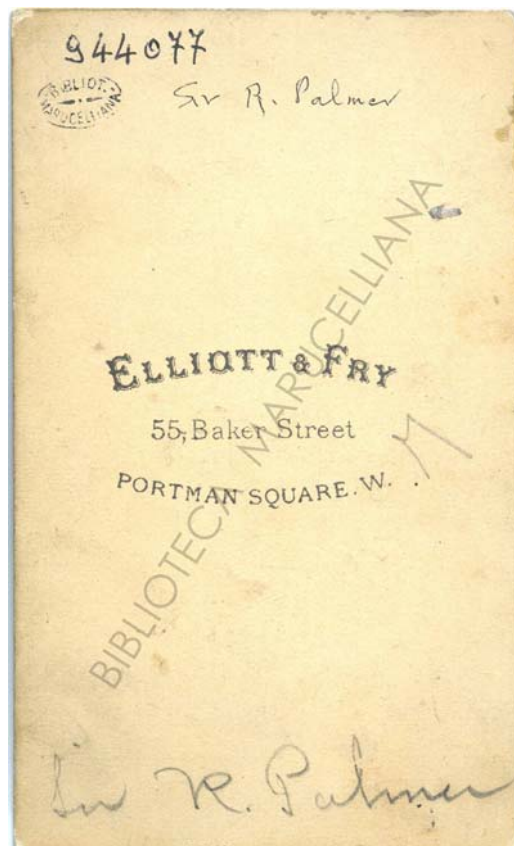
10.37v



10.38r



10.38v



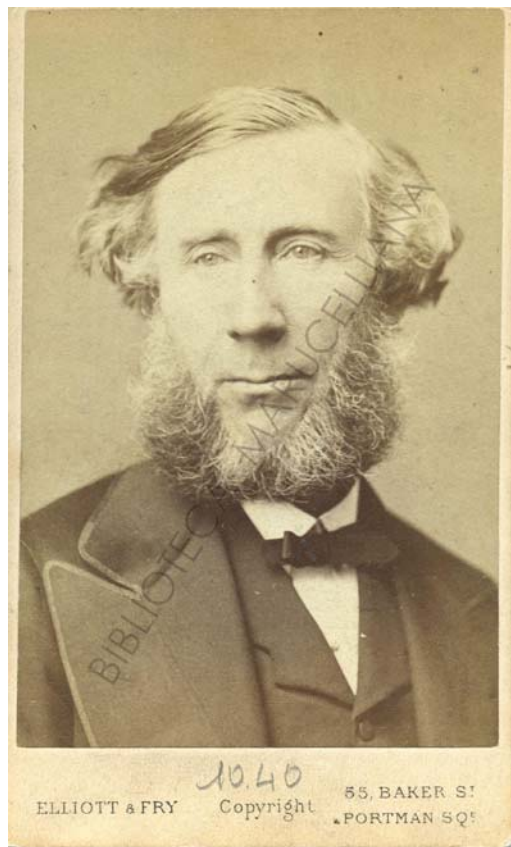
10.39r



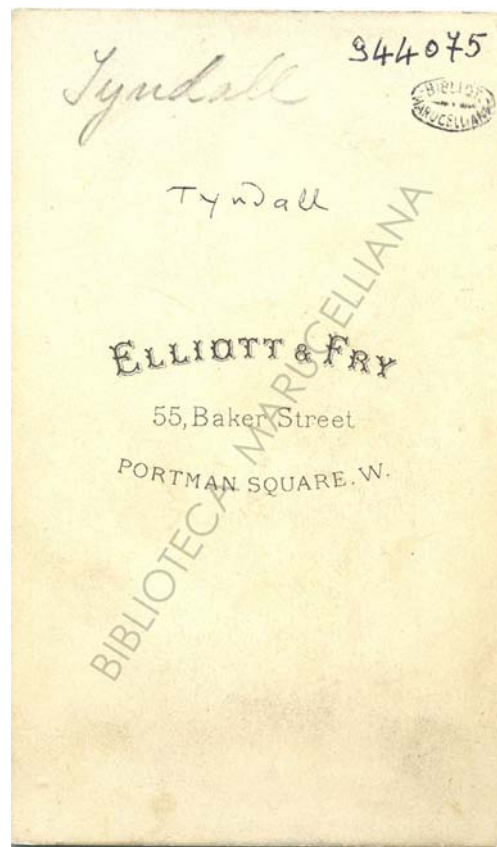
10.39v



10.40r



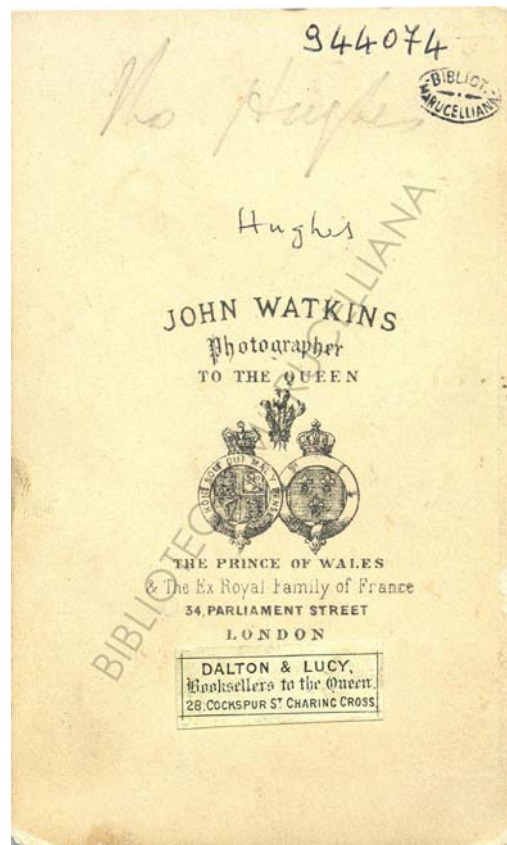
10.40v



10.41r



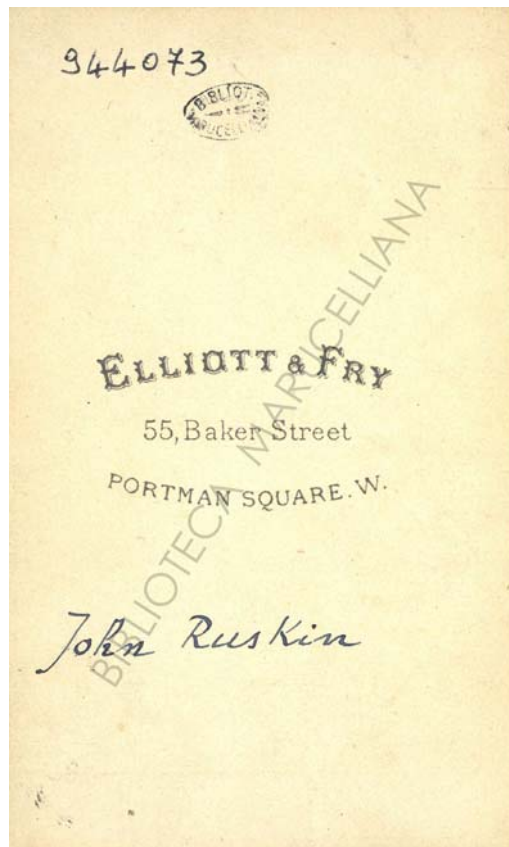
10.41v



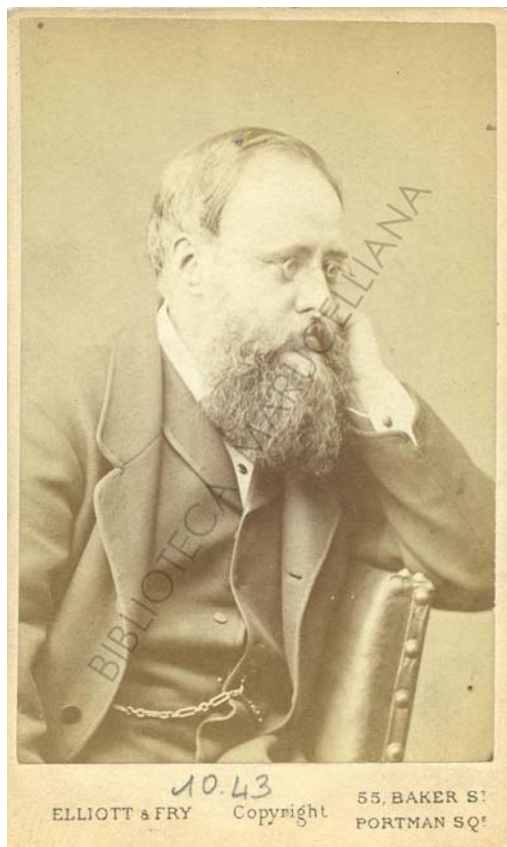
10.42r



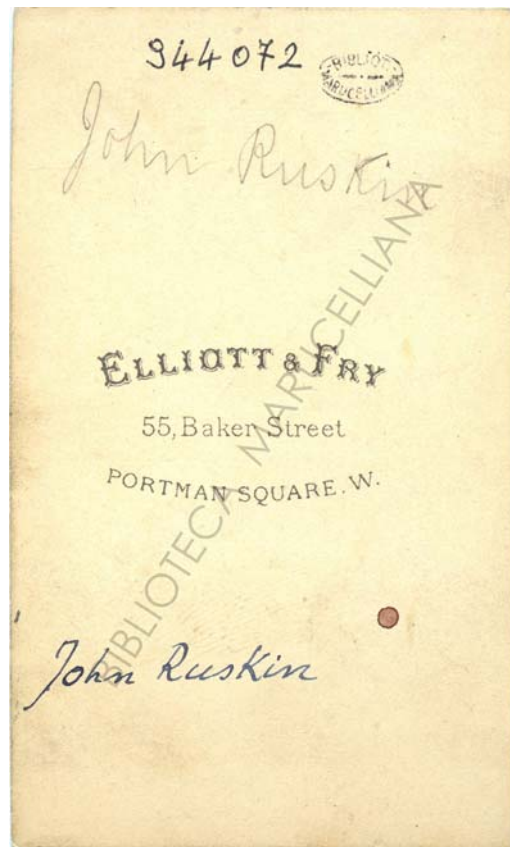
10.42v



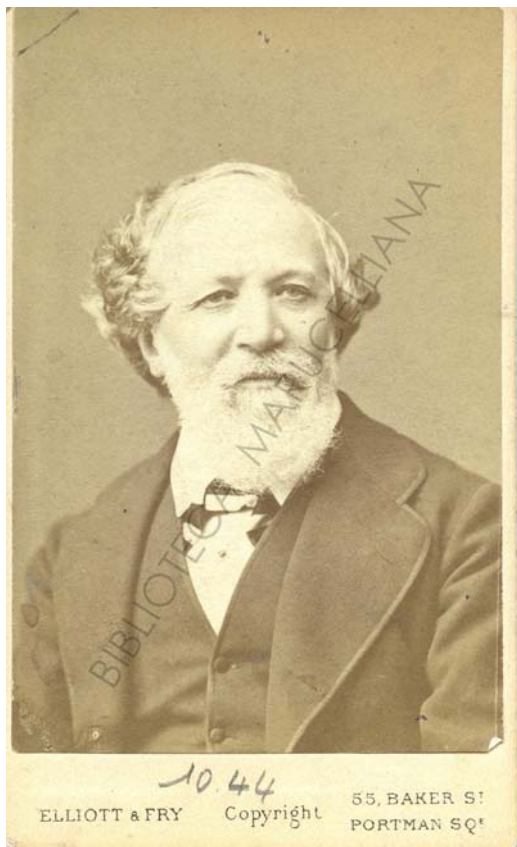
10.43r



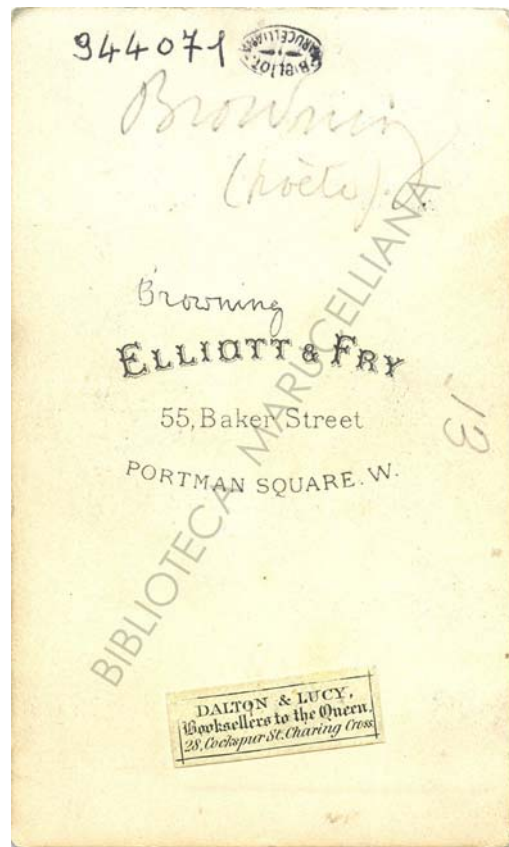
10.43v



10.44r



10.44v



FONDO VITALI (10)

COLLOCAZIONE	INVENTARIO	SOGGETTO	DESTINATARIO	MITTENTE	LUOGO	DATA	FOTOGRAFO	LUOGO	NOTE
10. 01	944114	RITRATTO MASCHILE	-	-	-	-	ELLIOTT & RRY	LONDRA	-
10. 02	944113	RITRATTO MASCHILE	-	-	-	-	WATKINS JOHN	LONDRA	-
10. 03	944112	FIGURA MASCHILE	-	-	-	-	SOTHWELL	LONDRA	-
10. 04	944111	NUDO MASCHILE	-	-	-	-	BLANCHARD VALENTINE	LONDRA	-
10. 05	944110	LAWSON WILFRID	-	-	-	1861	CLARKINGTONS	LONDRA	-
10. 06	944109	RITRATTO MASCHILE	-	-	-	-	WHITLOCK HENRY JOSEPH	BIRMINGHAM	-
10. 07	944108	RITRATTO MASCHILE	-	-	-	-	ELLIOTT & RRY	LONDRA	-
10. 08	944107	RITRATTO MASCHILE	-	-	-	-	WALKER SAMUEL, ALEXANDER SAMUEL A.	LONDRA	-
10. 09	944106	RITRATTO MASCHILE	-	-	-	-	RUSSELL & SONS	CHESTER	-
10. 10	944105	RADETOCK	-	-	-	-	MAULL & C.	LONDRA	-
10. 11	944104	SMUTH	-	-	-	-	EDWARDS & BULLT	LONDRA	-
10. 12	944103	CUMMINGS	-	-	-	-	WATKINS JOHN & CHARLES	LONDRA	-
10. 13	944102	CUMMINGS	-	-	-	-	WATKINS JOHN	LONDRA	-
10. 14	944101	CULLOCK EVANS	-	-	-	-	HOOPER GED	LONDRA	-
10. 15	944100	BAMBINI DEL PRINCIPE ETUART	-	-	-	-	BUCE LEOPOLD	GRAZ	-
10. 16	944099	ROEBRUCK	-	-	-	-	WATKINS JOHN	LONDRA	-
10. 17	944098	ROEBRUCK	-	-	-	-	WATKINS JOHN	LONDRA	-
10. 18	944097	MORLEY	-	-	-	-	ELLIOTT & RRY	LONDRA	-
10. 19	944096	RITRATTO MASCHILE	-	-	-	-	TALLON LARENTE DENIS	-	-
10. 20	944095	RITRATTO MASCHILE	-	-	-	-	DICKINSON BROS	LONDRA	-
10. 21	944094	GREY	-	-	-	-	ELLIOTT & RRY	LONDRA	-
10. 22	944093	KINSLEY	-	-	-	-	ELLIOTT & RRY	LONDRA	-
10. 23	944092	LAWSON WILFRID	-	-	-	LUGLIO 1870	WILLIAMS & MAYLAND	LONDRA	-
10. 24	944091	LAWSON WILFRID	-	-	-	FEBBRAIO 1869	BERNERI CALDER & CO	LONDRA	-
10. 25	944090	WESTMORELAND CONTE DI	-	-	-	-	RUSSELL & SONS	CHESTER	-
10. 26	944089	CLIFFORD AUGUST	-	-	-	-	WALKER SAMUEL, ALEXANDER	-	-
10. 27	944088	BRIGHT JACOB	-	-	-	-	WILLIAMS THOMAS RICHARD FIELD	LONDRA	-
10. 28	944087	RITRATTO MASCHILE	-	-	-	-	MORFAT L	EDIMBURGO	-

FONDO VITALI (10)

COLLOCAZIONE	INVENTARIO	SOGGETTO	DESTINATARIO	MITTENTE	LUOGO	DATA	FOTOGRAFO	LUOGO	NOTE
10. 29	944086	OLYV GEORGE GRENPELL, SECONDO BARONE DI WOLVERTON	-	-	-	-	WATKINS JOHN	LONDRA	-
10. 30	944085	RITRATTO MASCHILE	-	-	-	-	MAULL & C.	LONDRA	-
10. 31	944084	HARDY GATHORNE	-	-	-	-	MAULL & C.	LONDRA	-
10. 32	944083	RITRATTO MASCHILE	-	-	-	-	ALLEN R. E FIELD	NOTTINGHAM	-
10. 33	944082	MORLEY SAMUEL	-	-	-	-	LONDON STEREOGRAPHIC & PHOTOGRAPHIC COMPANY	LONDRA	-
10. 34	944081	RITRATTO MASCHILE	-	-	-	-	LONDON STEREOGRAPHIC & PHOTOGRAPHIC COMPANY	LONDRA	-
10. 35	944080	FROUDE JAMES ANTHONY	-	-	-	-	WHITLOCK HENRY JOSEPH	-	-
10. 36	944079	RITRATTO MASCHILE	-	-	-	-	WATKINS JOHN	LONDRA	-
10. 37	944078	TROLLOPE ANTHONY	-	-	-	-	LONDON STEREOGRAPHIC & PHOTOGRAPHIC COMPANY	LONDRA	-
10. 38	944077	PALMER R.	-	-	-	-	ELLIOTT & RY	LONDRA	-
10. 39	944076	WELLINGTON DUCA DI	-	-	-	-	HENNAH & KENT	BRIGHTON	-
10. 40	944075	TYNDALL JOHN	-	-	-	-	ELLIOTT & RY	LONDRA	-
10. 41	944074	HUGHES	-	-	-	-	WATKINS JOHN	LONDRA	-
10. 42	944073	RUSKIN JOHN	-	-	-	-	ELLIOTT & RY	LONDRA	-
10. 43	944072	RUSKIN JOHN	-	-	-	-	ELLIOTT & RY	LONDRA	-
10. 44	944071	BROWNING ROBERT	-	-	-	-	ELLIOTT & RY	LONDRA	-